



BANANA-Clip

The new concept of
hemorrhoid ligation



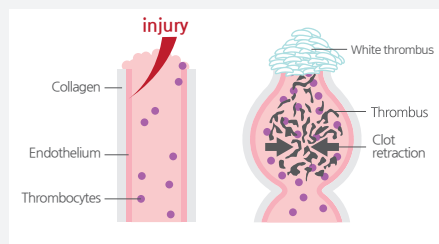
- 1) Bosses are designed to retain clip in applicator jaws
- 2) Integrated teeth interface with the vessel and are designed to prevent slippage
- 3) Bow-shape design allows removal with appropriate instrument
- 4) Hinge allows flexibility in clip placement prior to clip locking
- 5) Locking mechanism provides tactile feedback and secure closure



Indication of BANANA-Clip : Internal hemorrhoid grade I~III

1. Almost no delayed bleeding

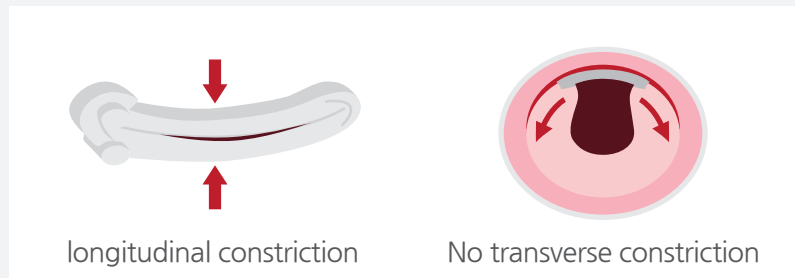
Vasoconstriction and clot formation (thrombocyte plug) after definitive endothelial injury of hemorrhoidal vessel by BANANA-Clip can prevent delayed bleeding more effectively than rubber band.



e.g. Dr. Kang
at Wellness hospital in Busan
has experienced no delayed
bleeding more than 1,600 cases

2. No stenosis after more than 3 BANANA-Clip ligation at one session

BANANA-Clip causes only longitudinal constriction of hemorrhoidal pile, not transverse constriction.



3. Convenience at mounting compared with rubber band

- ① BANANA-Clip
Can be installed at dedicated applier at once
- ② Rubber band
Rubber band should be installed at drum by hands every time



Endovision Co., Ltd.

66-26 Dongnae-ro,
Dong-gu, Daegu, KOREA
Tel . +82 53 751 1955
Fax. +82 53 751 1964
www.endovision.co.kr

Cat-BANANA-Clip-E200